



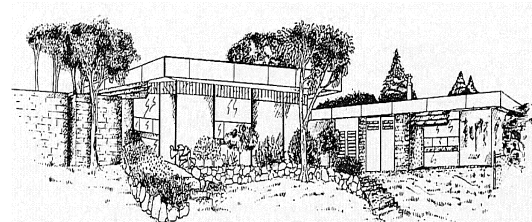
Southwell Primary School

26 Grandpre Crescent, Hamilton Hill 6163

☎ 9418 1622

Email: Southwell.ps@education.wa.edu.au

Web: www.southwellps.wa.edu.au



Principal: Elizabeth Melville

Manager Corporate Services:

Janine Hart

Newsletter

Week: 2 Term 4

17th October 2018



DATES TO REMEMBER

Week 3

Wednesday

24th October

School Open Day 1:45

PM followed by an

Assembly at 2:30 PM.

School will finish at

3PM this Wednesday.

Friday 26th October

School Council Meeting

1:30 PM in the library.

Week 5

Monday 5th November

Whole School Zoo

Excursion. Details to

follow.

Week 6

Tuesday 13th

November

P&C Meeting 2 PM in

the library.

Week 8

Monday 26th

November

Kindergarten

Orientation Day. 9 AM

Friday 30th November

School Development

Day. No students.

Dear Parents and Caregivers,

Each year the survey is offered to the school community so that they can share their point of view about how the school is serving their children. Responses have been many and warm. Families, students and staff all overwhelmingly agreed that we have good teachers who care about their students.

Some families felt they would like more support for their child's learning. Please come along to our open afternoon from 1:45pm on Wednesday 24th October. We want to hear about how best to support your children's needs at school as we are always looking for ways to improve education for students.

One of the best ways to help your children's education is to participate in the school. Be part of school council, help with morning reading programs, join the P&C or ask for homework for your child and send it back each day. Add notes to the teacher if you haven't time to call in.

The opinions of students was for some staff quite surprising as 100% of those surveyed like school, feel they are taken seriously and that they have interesting things to do at school. Many thought that behaviour at the school had improved but would like to see more progress in this area. It is nice to see that people have noticed a difference in behaviour management across the school. Our attendance rate has improved while timeout for poor behaviour and suspensions are down by a massive 69%.

Staff who completed the survey felt they would like to have a stronger relationship with the community, so please ring and make appointments, call into the school or send a note with your child. Staff want to hear from you. 100% of staff completing the survey believe that teachers expect students to do their best, teachers motivate students to learn and students like being at school.

I intend to continue to take everyone's opinions seriously and treat students fairly. I look forward to working with the community in providing a safe, well maintained school. As for the areas that you can see we need to change please let me know about them straight away rather than waiting for next year's survey. Thank you again for supporting the staff at Southwell.

Kind regards

Elizabeth Melville

Principal.

We would like to acknowledge the Noongar people who are the Traditional Custodians of this land. We would also like to pay respect to the Elders past and present of the Noongar nation and extend that respect to other Indigenous Australians who are or may be present.

FEELINGS



When we feel better, then we can think more clearly about what to do next. One of the major emphases of the P.A.T.H.S. program is to teach students how to recognise and talk about feelings. We want to give students alternative ways to express feelings other than to just ignore them or act them out. The ability to identify how we feel and how others feel and the capacity to express our feelings appropriately are very important for

understanding ourselves
relating to others
controlling our behaviours
solving our problems.

Often students (and adults) either don't know or are confused about how to express their feelings in an adaptive way. This often makes relationships very difficult and can make problems worse. Throughout the P.A.T.H.S. program students will learn and talk about different feelings. Some of the feelings are comfortable (happy, fine, excited etc.) and others are uncomfortable (angry, sad, confused, mad etc.) During the lessons, the students will be taught such things as :

different kinds of clues that help us recognise our own feelings
recognising the feelings of others,
how and why to consider another's point of view
how one's behaviour can affect other people
how the behaviour of others can affect oneself.

During the lessons an emphasis will be placed on the fact that all feelings are natural and OK to have but that some behaviours can be displayed from these different feelings are not always OK. Parents/ caregivers can use examples from home to reinforce this message to their student.

School Open Afternoon

Wednesday 24th October the classrooms will be open from 1:45 PM for you to come and visit. This is an opportunity for you to see work that your child has produced and what is happening in your child's class. While you are there you may like to approach teachers and request an interview to discuss your child's progress, address any concerns or express any other thoughts.

There will be an assembly to follow commencing at 2:30pm. School will finish at 3:00pm on this Wednesday.



Every Child

Every Chance

Every Day

New Books in the Library

We have over 330 new books in our library. Many thanks to Dymocks Bookstore of Garden City for involving us with the Children's Charities Program. Along with The Scholastic Book Fair funding and annual purchasing we have put together a wonderful display of the many new titles.



Kindergarten Enrolments for 2019

If you have a child turning four before June 30 2019 they are eligible to attend kindergarten next year. Please be sure to come and see Mrs Hart in the office to secure a place for your child in the coming year. Please pass this message to other family members or friends that are in the area. There will be a Kindergarten Orientation Day held on 26th November 2018 for all Kindergarten students enrolled for 2019. Make sure your child is invited.

School Council Meeting

The School Council will meet 26th October, next week. Venue: The meeting room in the library. Please attend and become part of this group. We will be seeking a new Chairperson for 2019. Southwell would also like to thank Mr Logan Howlett who has been the Chairperson since the Council's inception. Mr Howlett's help and guidance has been invaluable to us all.

"It's Not OK to Stay Away"

- We need you to attend school every day so we can help you learn as much as you can.
- You need to be at school every day to develop relationships with your teachers and your friends.
- Be here by 8.30 every day to start every day in a positive way!

We care and want to give *Every Child, Every Chance, Every Day*'

Every Child

Every Chance

Every Day

Fremantle Nightfields

Free Friday afternoon sport is on in the City of Fremantle again this term. **Nightfields** is an AFL based activity delivered to kids and youth (aged 6-18) in after school hours with the aim of encouraging positive community engagement and participation, developing healthier individuals and reducing anti-social behaviour. Each participant receives afternoon tea and dinner at every session and is also a good chance of receiving various giveaways throughout the 5 week program.

NIGHTFIELDS

FREMANTLE NIGHTFIELDS

FREE FOOD

FREE GIVEAWAYS

WHO: 8 – 18 year olds (males and females)
SPORTS: AFL and basketball
WHERE: Fremantle College, Annie st, Beaconsfield
WHEN: Friday afternoons from 3pm – 4.30pm

12 OCTOBER 19 OCTOBER 26 OCTOBER 2 NOVEMBER 9 NOVEMBER

For more information please contact Liam Anthony on 0429 348 353 or lanthony@waflc.com.au

WEST OF PERTH
BULLDOGS
play AFL
STEPHEN MICHAEL
Fremantle
headpace
redix outdoors
FREMANTLE COLLEGE

ALCOHOL, DRUG, VIOLENCE & SMOKE FREE

Every Child

Every Chance

Every Day