



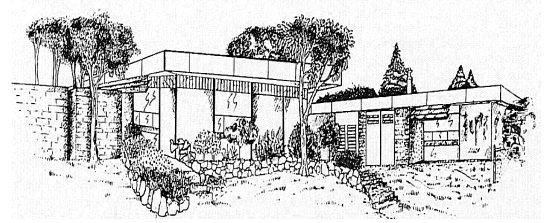
# Southwell Primary School

26 Grandpre Crescent, Hamilton Hill 6163

☎ 9236 9400

Email: [Southwell.ps@education.wa.edu.au](mailto:Southwell.ps@education.wa.edu.au)

Web: [www.southwellps.wa.edu.au](http://www.southwellps.wa.edu.au)



Principal: Elizabeth Melville  
Manager Corporate Services:  
Janine Hart

## Newsletter

Week: 8 Term 2

15 June 2020

Dear Parents and Caregivers,

### Southwell uses play-based learning as an intentional teaching practice



Southwell's focus on play based learning in kindergarten to year two ensures children learn in a safe physical environment that provides a rich and diverse range of learning experiences. Play based learning helps children organise and make sense of their social worlds.

By focusing on social and emotional skills children develop positive relationships, they learn to get along with one another, communicate their needs in a positive and acceptable manner and resolve conflicts. Playing cooperative games activates learning of social, emotional skills sense of belonging to our community. A sense of connectedness to school makes engagement with learning more comfortable for children.

Creativity is vital for children to find solutions to their problems. Imagination in play develops curiosity and builds creative problem-solving skills.

Outdoor and indoor spaces provide quality experiences that support participation and engagement for every child. Play-based learning develops intellectual skills, thinking and motivation. "Research has explored the importance of play for a child's overall development and we know that play is closely associated with the development of intellectual skills, thinking and motivation." Australian National Quality Standards.

When you walk into our classrooms you will find learning stations with clearly labelled learning intention so that you can support your child's learning at home. We Are Learning To (WALT). We do this to explicitly highlight what students are being asked to do (WALT = the learning intention) and what we help them learn (WILF = the success criteria) to help them to make better decisions about how to tackle a task.

Play based learning supports language development through asking questions, encouraging conversation and introducing unfamiliar words. Come and see us. We look forward to explaining how you can help your child at home with their play based learning.

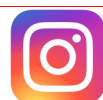
Kind regards,

*Elizabeth Melville*

Principal



Like us on Facebook



Follow us on Instagram

*We would like to acknowledge the Noongar people who are the Traditional Custodians of this land. We would also like to pay respect to the Elders past and present of the Noongar nation and extend that respect to other Indigenous Australians who are or may be present.*

## *School Council Meeting 18 June*

### **You can influence how school is run – join the School Council**

People of the community can influence what happens in classrooms, what happens in grounds and the decisions made by the principal. We have a school council which meets to discuss the development of the school and make decisions. Your ideas could ensure community expectations and the school's priorities reflect the needs of students.

School Council take part in:

- establishing and reviewing the school's objectives, priorities and general policy directions;
- planning financial arrangements necessary to fund those objectives, priorities and directions;
- evaluating the school's performance in achieving those objectives, priorities and directions;
- formulating codes of conduct for students at the school;

**The next meeting will be held in the Library at 1:45pm Thursday 18 June 2020.**

## *Southwell Staff Hard At Work*



*Every Child*

*Every Chance*

*Every Day*



## ***Morning Fitness Rewards***

I love to run in the morning because it makes me feel better and become a faster runner. When I become a faster runner I push myself so that I can achieve my goals and when I'm running I can do just the thing that I love doing at school. So, that is how I feel about doing morning fitness at Southwell Primary School.

Azori Nyangara Year 5

I like running because it makes me feel good and fit.

Running makes me feel that I achieve and I will not stop running because I want to be the best runner.

Violet Hayden Year 4



## ***100 Lap Achievement***

Congratulations go to Beteli Nyangara and Cooper Sharpe seen here receiving their 100 Lap Certificates along with some photos of the Fitness group enjoying a reward for their dedicated efforts.



***Every Child***

***Every Chance***

***Every Day***

# Approved Specialist Programs 2021



APPLICATIONS CLOSING DATE CHANGE  
to **19 June 2020**



Current Year 6 students are invited to apply for the below Approved Specialist Programs operating at Fremantle College:

- Specialist Contemporary Music
- Specialist Marine Studies
- Specialist ICT
- Specialised Learning Program - Autism Spectrum Disorder

Apply online at

<https://fremantlecollege.wa.edu.au/applications-for-approved-specialist-programs>

[www.fremantlecollege.wa.edu.au](http://www.fremantlecollege.wa.edu.au)

P: (08) 9338 8900 E: [fremantle.college@education.wa.edu.au](mailto:fremantle.college@education.wa.edu.au)

## *Dates To Remember*

**18/6/20** School Council Meeting  
1:45 in the Library.

**3/7/2020** End of Term 2.  
**20/7/2020** Term 3 begins for all  
students Pre Primary  
to Year 6.

## *Merit Awards*

Merit Certificate recipients last week:

Brendon Flatfoot  
Jil De Carvalho  
Beteli Nyangara  
Nicolas Mugisha  
Jd Morley-Yarran

Well done everyone!

*Every Child*

*Every Chance*

*Every Day*