



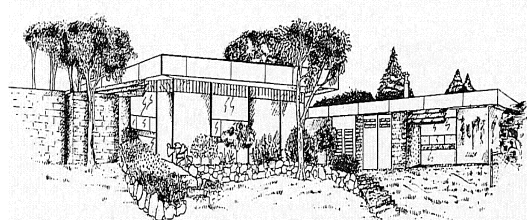
# Southwell Primary School

26 Grandpre Crescent, Hamilton Hill 6163

☎ 9418 1622

Email: [Southwell.ps@education.wa.edu.au](mailto:Southwell.ps@education.wa.edu.au)

Web: [www.southwellps.wa.edu.au](http://www.southwellps.wa.edu.au)



Principal: Elizabeth Melville  
Manager Corporate Services:  
Janine Hart

## Newsletter

Week: 2 Term 2

7th May 2018



### DATES TO REMEMBER

**Tuesday 8th May**  
**P&C Meeting 2pm.**

**Sunday 13th May**  
**Mothers Day**

**Tuesday 15th,**  
**Wednesday 16th &**  
**Thursday 17th May**  
**NAPLAN Testing**

**Wednesday 16th May**  
**School Council Meeting**  
**1:30 pm &**  
**Assembly 1:55pm.**

**Friday 18th May**  
**Walk to School Day**

**Monday 21st May**  
**Scitech—Whole School**  
**Excursion**

**Friday 1st June**  
**Pupil Free Day.**

**Monday 4th June**  
**Western Australia Day**  
**Public holiday.**

Dear Parent & Care Givers

During 2018 our year one and two students have been blessed to have Mrs Rowe and Mrs McDowell lead them through an intensive literacy program. Many weekends of preparation and after school meetings go into planning at this level. These teachers have carefully crafted learning journeys for students that targets personal needs as well as promote the interests and talents of each student.



These expert teachers operate collaboratively with the whole school. They make the time to share their skills and understandings with all staff about the impact of early childhood education on future learning. Through their dedication Mrs Rowe and Mrs McDowell develop and expand quality teaching in your school.

It is worth noting also that both photos were taken on occasions that Mrs Rowe and Mrs McDowell came into school to work with children on their day off work.

If your child is in year one or two and you haven't had the opportunity to talk to them,

I strongly recommend you make an appointment. They will be very happy to offer ways that you can further extend your child's education.

Kind regards,  
Elizabeth Melville  
Principal

*We would like to acknowledge the Noongar people who are the Traditional Custodians of this land. We would also like to pay respect to the Elders past and present of the Noongar nation and extend that respect to other Indigenous Australians who are or may be present.*

## *School Council & Assembly*

The School Council will meet on Wednesday 16th May at 1:30pm. Assembly will follow at 1:55pm. Please come along as one lucky family will win their Voluntary Contribution fees back. All welcome.



## *Canteen News*

Please note that the canteen will only operate on Wednesdays and Fridays from now on.

## *P&C Meeting*

Southwell P&C will meet on Tuesday 8th May at 2pm. Come along and support your P&C and have fun being involved in this friendly part of the school community.

## *Welcome to Nina*

Nina has arrived to a warm welcome from everyone. Though still very shy she has met all the students and staff along with many others from our school community. We all look forward to spending time with our lovable and loving new friend.



## *NAPLAN*

Children in years three and five will participate in NAPLAN Testing on Tuesday 15th, Wednesday 16th and Thursday 17th of week three this term. Be sure children have a nutritious breakfast each morning, are well rested with an early to bed routine in place and arrive at school on time for a 9am start.



*Every Child*

*Every Chance*

*Every Day*

# Friday Playgroup

Would you like to get together with your babies and young children in a relaxed and friendly environment to learn together through play? Then you need to be part of our playgroup.

Playgroups are a great way for your kids to interact with other children in a fun and safe environment, while giving you the opportunity to interact with other parents.

All parents, caregivers and extended family who would like to help their child to playfully prepare for school are most welcome.



## Join us!

**Children in kindergarten are welcome to attend Friday playgroup.**

**Beginning Friday 18th May 9:30am then every Friday morning at Kindergarten**



## P&C Meeting

Southwell P&C will meet on Tuesday 8th May at 2pm. Come along and support your P&C and have fun being involved in this friendly part of the school community.

## Chairs

We have some chairs that we no longer use. If you are interested they are free to a good home. Please see Mrs Hart in the office.



*Every Child*

*Every Chance*

*Every Day*



# *ANZAC Day at Southwell*



*Every Child*

*Every Chance*

*Every Day*