



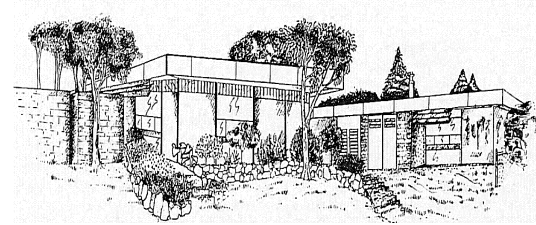
Southwell Primary School

26 Grandpre Crescent, Hamilton Hill 6163

☎ 9418 1622

Email: Southwell.ps@education.wa.edu.au

Web: www.southwellps.wa.edu.au



Principal: Elizabeth Melville

Manager Corporate Services:
Janine Hart

Newsletter

Week: 7 Term 1

19th March 2018



DATES TO REMEMBER

Wednesday 21st March
Harmony Day

Wednesday 21st March
2:30 Early Close resumes.

Wednesday 28th March
Assembly

Friday 30th March - To
Tuesday 3rd April
inclusive.
Easter Break.

Wednesday 4th April
School resumes

Friday 13th April
School Holidays begin.

Dear Parent & Care Givers

In the interests of getting students curious about Mathematics at the beginning of the year, Math day and Pi day (π day) was set to run early in the year. March 14 is celebrated as Pi Day because the date looks like 3.14 for those that write dates in the month then day format, but that is rarely used outside of the Americas and China. Most places around the world use day then month which is a different system to America, where Pi Day was started.

Math day would normally occur later in the year. As we are celebrating Pi Day for the first time we decided to consecutively run the two events. The Math day is the 'lead in' activity for Pi day so everyone could get into the concept and consider how this may work in the future.

We designed the educational purpose behind Math Day to fit with the needs of students at Southwell. **Many thanks to Ms Boreham** who spent a great deal of her time planning the events. During the events, teachers were creating real-world, relevant and purposeful learning experiences in mathematics to move beyond the common attitude towards mathematics as boring or irrelevant. This enabled students to enhance their ability to have a more positive and successful experience with maths and science. $\pi = 3.141\ 592\ 653\ 589\ 79\dots$

Math Day and π day are primarily a chance to engage in a meaningful and fun manner with math and science. This opportunity exposes students to language that builds in the developmental aspects of the learning of mathematics.

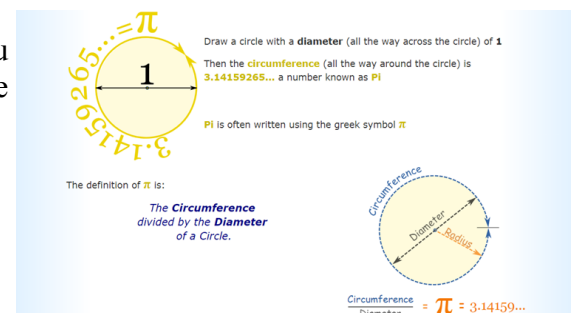
While celebrating π day students got right into the activities while observing the fun side of math and science. Judging by the response of students, they enjoyed the activities which were designed to re-inforce, explore and develop the significance of working mathematically. The event stimulated a lot of questioning and investigation by students.

π is possibly the most famous number in the world, however, I was very impressed that a year two student could tell me about Pi day.

π represents the ratio of circle's circumference to its diameter, and it is typically written as 3.14

I've added the diagram for those of you who left school long ago and may have forgotten about π .

Kind regards,
Elizabeth Melville
Principal



We would like to acknowledge the Noongar people who are the Traditional Custodians of this land. We would also like to pay respect to the Elders past and present of the Noongar nation and extend that respect to other Indigenous Australians who are or may be present.

Assembly

An Assembly will be held on Wednesday next week, 28th March. All welcome at 1:55 in the undercover area. Please note that 2:30 Early Close resumes as per normal Wednesday 21st March.



Family Survey

There is a Southwell PS Survey (2018) that is available from the office. This survey is issued on behalf of the School Nurse and we encourage all families to complete and return the survey to the office as soon as possible.

The information is anonymous (no names are on the form) and will be used to try and have a School Nurse on site at the school.

Please complete the form and return it to the office as soon as possible.



Easter Break

This year the Easter break will be from Friday 30th March to Wednesday 4th April. Please note that school resumes on the Wednesday 4th April, not on the Tuesday.



Voluntary Contributions Incentive 2018

Southwell Primary School relies on the voluntary contribution from all families to help provide your children with an enriched education and we would like to thank those families that have paid already.

As an incentive we are placing the names of all children whose voluntary contributions have paid into a draw. The winner will receive a refund of \$30 and be announced at assembly on **16th May**. To be eligible to win you simply have to pay your voluntary contribution by **April 13th** the end of term 1.

Voluntary Contributions are \$30 per student and can be paid to Mrs Hart in the office. These funds help to provide materials that might not be affordable through school funding (Extra art supplies, purchase of apps for the iPads etc.). They also go towards reducing the cost of school excursions and incursions.

Canteen News

We welcome the opening of the Canteen for 3 days (Monday, Wednesday and Fridays) per week. Each day there is a regular menu with a special item available for each of the different days.

If anybody has a spare fridge that they would be willing to donate to the canteen could you please contact the P&C on a canteen day. Please support the canteen and P&C and help this worthwhile group continue to operate.



Every Child

Every Chance

Every Day

Math Day / Pi Day Fun

Calculate

Problem Solving

Estimate

Build

Trade

Mix & Match

Pizza!

Threading Numbers

Count

π

Every Child

Every Chance

Every Day



Kids and Anxiety

Free parent information session provided by City of Cockburn

The facilitator from **Resilience Kit** will assist parents to understand anxiety, behaviour and protective factors for young children 4+ years.

Event Details



When: Saturday, 24 March 2018
Time: 10am-12 noon
Who: Parents/Carers of children 4+ years
What: Information session, morning tea (regret no crèche/children)
Where: Group Room, Cockburn Health & Community, Wentworth Pde, Success (Carpark below or Gateways)

Registrations (essential): Jayne McEniry 9411 3855 Joan de Castro 9411 3444



Meerilinga



KEYSA

SOUTH WEST METROPOLITAN PARENTING PARTNERSHIP



FREE

HARMONY EVENT

Legacy Park – Veterans
Parade, Cockburn Central
Saturday, 17 March
11am to 2pm

Celebrate cultural and religious diversity with
FREE entertainment and activities for the
whole family including:

- » Face painting & Henna
- » Cultural performances
- » Info stalls
- » Guided meditation
- » Arts & crafts

For further info, contact
communitydevelopment@cockburn.wa.gov.au
or call **08 9411 3444**.

Brought to you by the City of Cockburn
in partnership with local cultural and
religious groups.

cockburn.wa.gov.au



This information is available in
alternative formats upon request

Every Child

Every Chance

Every Day