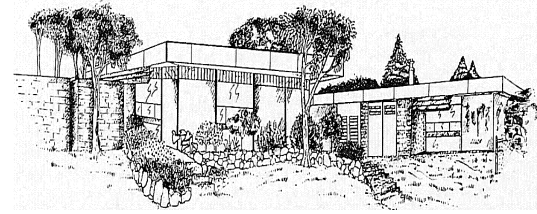




# Southwell Primary School



26 Grandpre Crescent, Hamilton Hill 6163

☎ 9418 1622

Email: [Southwell.ps@education.wa.edu.au](mailto:Southwell.ps@education.wa.edu.au)

Web: [www.southwellps.wa.edu.au](http://www.southwellps.wa.edu.au)

Principal: Elizabeth Melville

Registrar: Janine Hart

## Newsletter

Week: 1 Term 1

2nd February 2018



### DATES TO REMEMBER

**Monday 5th February**  
Before school Sport Program starts at 8AM.

**Thursday 8th February**  
Family Breakfast

**Tuesday 13th February**  
P&C Meeting 2PM.

**Wednesday 14th February**  
ARC Excursion 12:45PM.

**Wednesday 21st February**  
School Council Meeting 1:30PM  
School Assembly 1:55PM

**Friday 2nd March**  
Pupil Free Day

**Monday 5th March**  
Labour Day  
Public Holiday.

**Tuesday 6th-16th March**  
Swimming Lessons.

Dear Parent & Care Givers

Welcome to Southwell Primary School where we take pride in the way in which we continuously work together to provide quality teaching and learning experiences for our students.

We welcome families from our local area and indeed across the world. Our staff are keen to work with families and have very clear goals for involving you in the school which include:

- providing success for students
- serving the needs of students
- sharing responsibility for the education of students.

A sense of belonging or connectedness to school and family is a prominent feature in the wellbeing of young people. The competitive nature of the later years can isolate young people. Southwell Primary promotes student's sense of belonging to community. Together we can support students through the pressures of growing up. Together we can help students manage many of the key developmental tasks that occur during childhood.

There are principles identified through research which I believe underpin effective family and school relationships. I promote these to staff in discussions and meetings. I have placed them below to share with you.

- All families and schools want the best for their children.
- All children have the right to the opportunity to reach their full potential.
- Families are the first and continuing educators of their children.
- Effective schools provide a nurturing and supportive learning environment.
- Families and schools value quality teaching and respect teachers' professional expertise.
- Families and schools value the diversity of families and use this as a resource for building partnerships and communities.
- Family-school partnerships are based on mutual responsibility, respect and trust.
- Leadership is critical to building, maintaining and renewing partnerships.
- Family-school partnerships improve student motivation and learning.
- Family-school partnerships strengthen the connections between schools and their communities.
- Partnerships can involve all organisations that support families and schools.

Kind regards,  
Elizabeth Melville  
Principal

*We would like to acknowledge the Noongar people who are the Traditional Custodians of this land. We would also like to pay respect to the Elders past and present of the Noongar nation and extend that respect to other Indigenous Australians who are or may be present.*

## *Anonymous Benefactor*

In 2016 we were contacted by an anonymous benefactor with the desire to promote the welfare of students at Southwell and offered an especially generous donation of money by means of a voucher for each family.

Unexpectedly, at the close of 2017, the same benefactor came forward and asked what we would feel would be useful for our students and we elected school shirt, hat, bag and jumper (for term 2).

All our students look so smart kitted out with the right school clothes and bags. Southwell families have made it clear they would like our benefactor to know children are delighted by the generosity to them.



## *KOYA Group*

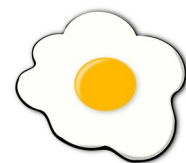
WE would also like to acknowledge KOYA in their support of students by providing stationary for those who may otherwise have started the year without basic stationary.

## *Basketball & Football Coaching*

Come to school early Monday to Thursday and enjoy free basketball and football coaching followed by breakfast. Sessions start This Monday at 8 AM 5th February.

## *Family breakfast*

A Family Breakfast will take place on Thursday next week February 8th at 8:30. Anyone who is able to help out preparing breakfast should come at 8AM. Please join us for a delicious brekkie.



## *ARC Excursion*

LATE FINISH (3pm) on Wednesday, 14th February, students will travel to Cockburn ARC to participate in an afternoon of physical activity designed to promote a coordinated approach to a healthy lifestyle. Students will meet Wildcat and Docker players while participating in a range of activities across the afternoon.

**Attendance** and engagement at school is **paramount** to students **attending** this **excursion**. Students must attend during week one and two of term one 2018 to be included in this event. Closing this gap in school attendance is critical to reducing the gaps in educational outcomes and in employment in later life.

Bus leaves at 12:45 .Parents are welcome to join us but must find their own transport.

*Every Child*

*Every Chance*

*Every Day*

## *Swimming Lessons*

Swimming lessons for 2018 will take place during weeks 6 and 7 this term and will commence on the Tuesday 6<sup>th</sup> March through to Friday 16<sup>th</sup> March at Fremantle pools once again. The cost was \$55 per child. The school is subsidizing \$20 per child to reduce the cost to \$35 per student. Students from Pre Primary to Year 6 are expected to attend. Please feel free to start making payments to Mrs Hart in the office at any time. Forms and information will be sent home soon



## *P&C Meeting*

P & C Committee needed.

Southwell does not have a P & C for 2018. A meeting will be held on Tuesday 13<sup>th</sup> February 2:00pm for those interested in being part of the P & C. If a committee is not formed there will be no canteen or other events that students have come to enjoy over the years.

## *Assembly*

Wednesday February 21<sup>st</sup> is our first assembly of the year. We aim to have three assemblies per term at Southwell. Please join us at the new time of 1:55PM and be a part of our school community.

## *School Council Meeting*

The School Council will meet on **February 21<sup>st</sup>** at 1:30. All Parent and Caregivers of a Southwell student are encouraged to attend the meeting. Act, Belong, Commit. Come and join us!

## *Voluntary Contributions Incentive 2018*

Southwell Primary School relies on the voluntary contribution from all families to help provide your children with an enriched education and we would like to thank those families that have paid already.

As an incentive we are placing the names of all children whose voluntary contributions have paid into a draw. The winner will receive a refund of \$30 and be announced at assembly on **16<sup>th</sup> May**. To be eligible to win you simply have to pay your voluntary contribution by **April 13<sup>th</sup>** the end of term 1.

Voluntary Contributions are \$30 per student and can be paid to Mrs Hart in the office. These funds help to provide materials that might not be affordable through school funding (Extra art supplies, purchase of apps for the iPads etc.). They also go towards reducing the cost of school excursions and incursions.

## *School Development Day*

**There is a Pupil Free day on Friday 2 March.**

Students do not attend on this day but the staff will be working hard, discussing and organizing for the rest of this term and planning for a great year.

*Every Child*

*Every Chance*

*Every Day*



