



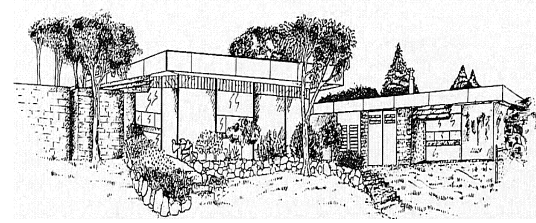
Southwell Primary School

26 Grandpre Crescent, Hamilton Hill 6163

☎ 9418 1622

Email: Southwell.ps@education.wa.edu.au

Web: www.southwellps.wa.edu.au



Principal: Elizabeth Melville

Newsletter

Week: 11 Term 1

11th April 2018



DATES TO REMEMBER

Friday 13th April
School Holidays begin. (2 weeks)

Monday 30th April
First day of Term 2.
Pre primary-Year 6 students attend on Monday 30th and Kindy students on Tuesday 1st May.

Thursday 3rd May
Southwell Primary ANZAC Assembly at 9AM.

This morning Southwell Year 5/6 students took part in the annual RSL City of Cockburn ANZAC Youth Parade and Service at Memorial Park.

At Southwell we take great pride when out in the community and this morning our students must be commended for their Integrity while representing our school at such a large public gathering.

Southwell Primary will hold an ANZAC Ceremony at school on Thursday 3rd May, week 1 of Term 2. Please join us at 9 AM.



We would like to acknowledge the Noongar people who are the Traditional Custodians of this land. We would also like to pay respect to the Elders past and present of the Noongar nation and extend that respect to other Indigenous Australians who are or may be present.

School Uniforms

Every child received a free school shirt at the beginning of this year. Please make sure your children are wearing a school shirt every day as children that are not wearing a Southwell school uniform shirt will be excluded from play and also be unable to attend any school excursions as they arise. As you are aware each child also will receive a school jumper this winter as well. These are now available from Mrs Hart in the office on request. Our school uniform lets the outside community know who we are and shows what pride we have in our school.



School Resumes....

Monday 30th April First day of Term 2.

Pre primary-Year 6 students attend on Monday 30th and Kindy students on Tuesday 1st May.

Voluntary Contributions Incentive 2018

Hurry! Just a few more days to take part in this incentive.

Southwell Primary School relies on the voluntary contribution from all families to help provide your children with an enriched education and we would like to thank those families that have paid already.

As an incentive we are placing the names of all children whose voluntary contributions have paid into a draw. The winner will receive a refund of \$30 and be announced at assembly on **16th May**. To be eligible to win you simply have to pay your voluntary contribution by **April 13th** the end of term 1.

Every Child

Every Chance

Every Day