



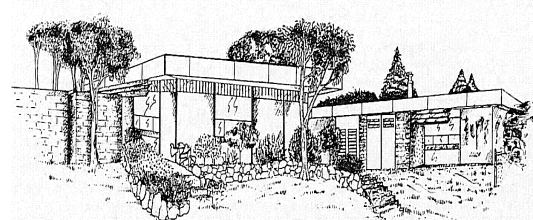
# Southwell Primary School

26 Grandpre Crescent, Hamilton Hill 6163

☎ 9236 9400

Email: [Southwell.ps@education.wa.edu.au](mailto:Southwell.ps@education.wa.edu.au)

Web: [www.southwellps.wa.edu.au](http://www.southwellps.wa.edu.au)



**Principal: Jason Bushe-Jones**

**Manager Corporate Services:  
Janine Hart**

## Newsletter

*Week: 2 Term 4*

*24 October 2019*



Dear Parents and Caregivers,

It has been a very positive start to Term 4 with students returning from a well-earned break with a terrific attitude to get straight back into their learning programs.

I am so pleased to be able to return this term as principal of this wonderful school. Ms Elizabeth Melville joined us for breakfast late last term and is looking forward to returning in 2020. In her absence, I look forward to progressing our improvement planning to ensure we provide the best educational programs to your children.

There have been a couple of staffing changes this term. I would like to formally welcome Mr Hayden Gloudemans to our staff. Mr Gloudemans will be teaching the Year 5/6 class this term, as you may be aware he was here last term in the same classroom. This change has allowed me to utilise the expertise of Ms Tracey Boreham who will be our Learning Support Coordinator for Term 4. Her role will be to lead the intervention programs for our student's at greatest academic risk. Ms Tracey will still be assisting the Year 6 students with graduation and end of year festivities. It is a very exciting time for Ms Phoebe Stoneman who will be going on maternity leave on November 14 to prepare for the birth of her first child. Ms Phoebe has decided to drop one day per week in preparation. This has allowed us to employ Mrs Michelle Hall who will teach pre-primary on Friday's for the rest of the term. Mrs Hall has proven to be a highly experienced and effective educator who will provide our students with continued stability moving forward. I would also like to officially welcome Mr Manish Vashith to our staff. Mr Vashith is our Network Support Officer who will join us every Friday to ensure all our technology resources and equipment function to their maximum capability. He worked here last term in a relief capacity and was a highly valued and sought after member of our team.

We have a new Facebook and Instagram account. We will be using this on a regular basis to communicate important information and to share all the good news stories with our community. Please search Southwell Primary School on either platform to follow us (see the advertisement in this newsletter for instructions).

If you have been here before school this term you would have noticed that we are running a new fitness program. We have set an obstacle course up around the oval and are tracking how many circuits each student does. This is a great healthy and fun way to start the day. Students who complete 100 circuits will receive a bronze medal, silver for 200 and gold for anyone that can complete 300 circuits before the end of term.

Do you have a child that was born between 1 July 2015 and 30 June 2016? If so, enrolments for 2020 Kindergarten are now open. Just come into the front office with a birth certificate, immunisation form and proof of address and we can organise the rest with you. We would like to organise a transition/open day for all new enrolments this year to allow your child an opportunity to get to know Southwell before they commence in 2020.

Yours sincerely,

*Jason Bushe-Jones*

Principal

## *Aboriginal Health and Wellbeing Event*

The Cockburn Health and Community are holding an Aboriginal Health and Wellbeing event Wednesday 30 October. The children of Southwell in Year 1-6 have been invited to attend. There will be activities and performers at the event for the children to enjoy. A bus, morning tea and lunch have been supplied by Cockburn Integrated Health. There is no cost to students. Permission slips were sent home today.

## *Pre Primary Zoo Visit*

Pre Primary students are very lucky to be visiting the Perth Zoo next Tuesday 29 October. Students will have the chance to explore what plants and animals need to grow and stay healthy. They will see and experience a wide range of animals and the environments in which they live. Permission forms have been sent out and need to be returned along with the subsidised \$15 ASAP.

## *Interschool Athletics Carnival*

Tuesday 29 and Thursday October 31 selected Southwell students will attend the Interschool Athletics Carnival at Santich Park in Munster. Children that are involved will have brought home relevant permission slips to be completed. These need to be completed and returned to school ASAP. We wish all participants the best of luck.

## *Southwell Assembly*

The assembly has been delayed until Wednesday 6 November of week 4. Join us to celebrate student achievement as Merit Certificates are presented and find out what's been happening at school.

## *Enrol Now For 2020*

The first years of school are so important. It is a time when your child discovers the wonder and excitement of learning, exploring and imagining.

All children from Pre-primary to Year 12 are guaranteed a place at their local public school.

We are now taking applications for enrolment.

You need to enrol for:

- **Kindergarten** —if your child turns four years old by 30 June 2020.
- **Pre-primary** —if your child turns five years old by 30 June 2020.  
(first year of compulsory school).

Visit Mrs Hart in the office now to enrol your children now.





*Every Child*

*Every Chance*

*Every Day*

## Facebook and Instagram Pages



Southwell Primary School has a new Facebook and Instagram Page




LIKE US TODAY BY SEARCHING FOR SOUTHWELL PRIMARY SCHOOL - THE NEW PAGE HAS THE COVER PICTURE BELOW. PLEASE NOTE: ALL THE OTHER PAGES ARE IN THE PROCESS OF BEING DELETED.

FOLLOW US ON INSTAGRAM AT SOUTHWELLPS

WE WILL BE REGULARLY SHARING IMPORTANT INFORMATION AS WELL AS GOOD NEWS STORIES OF ALL THE FANTASTIC THINGS THAT HAPPEN AT SOUTHWELL PRIMARY SCHOOL



Southwell Primary School  
@southwellprimarieschool  
6163



## Food Packages

Hello Southwell Community,

Southwell Primary School is committed to supporting parents, students and staff in a variety of ways,

We currently receive generous weekly food donations from *Foodbank*, *Second Harvest*, *Portcare* and *Manna*. As a result, we are able to make up food parcels to distribute to families. Should your child come home with a food parcel, it means your family has been randomly selected to receive one, and we hope that it might help in some small way.

As the School Chaplain, I am available at the School every Monday, and would love to hear from you if you would like more information or to seek any additional support..

Kind Regards

**Merryl Custers**  
**Chaplain**

*Every Child*

*Every Chance*

*Every Day*

# Creative Kids Art Club

***Come and join us for exciting art and craft!***

Kids after school art classes  
available in South Fremantle, 5-14yrs.

**Visit the website for more details and to book**

**[www.creativekidsartclub.com.au](http://www.creativekidsartclub.com.au)**







For more information, contact  
[clory.carrello@cihealth.com.au](mailto:clory.carrello@cihealth.com.au) or call Clory on 08 94943701

Cockburn Health & Community Facility  
11 Wentworth Parade, Success

Wednesday 30<sup>th</sup> October  
10am- 2pm

- Connect with service in your area
- Transport available



## DATES TO REMEMBER

**Remember, enrolment for Kindergarten and Pre Primary students for 2020 are due now.**

### Week 3

**Tuesday 29 October**  
**Pre Primary Zoo excursion.**

**Tuesday 29 and Thursday 31 October**  
**Interschool Athletics Carnival.**

**Wednesday 30 October**  
**Yr 1 to 6 Excursion—**  
**Aboriginal Health and Wellbeing.**

### Week 4

**Wednesday 6 November**  
**Assembly 2pm.**

***Every Child***

***Every Chance***

***Every Day***